




Minfos 4.0.1

Welcome to Minfos 4.0.1


This document provides an overview of the enhancements and support issue fixes in this Minfos release.

Highlights of this release:

-  Create and edit your labels in the new Label Maintenance window.
-  Search, maintain and review your pharmacy's categories.
-  Price Manager: New streamlined workflow for managing category pricing.

How to update Minfos

1. At any point in the day, download the latest Minfos software.
 - a. On the Minfos Launch Pad, click the **File** menu, then click **Minfos Net Terminal**.
The Minfos Net Terminal window is displayed.
 - b. Click the **Connect** menu, then click **1. Internet**. The Online Menu is displayed.
 - c. Check the **1 New Minfos Software** check box, then click **Okay**.
2. When you're finished trading for the day, ensure there are zero connections to your Minfos server.
Your Minfos software will update automatically, overnight.
3. Check that your Minfos software successfully updated. On the Minfos Launch Pad, click the **Help** menu, then click **About Minfos Software**.
The About Minfos Software window is displayed, and shows your current Minfos version in the **Applications Versions** box.

 If our support team has migrated your store to the tandem ESE or the ESE-only database, you can still update Minfos as you normally would.

Disclaimer

Screen captures from Minfos are used in this document. While care is taken to use fictional data, some of these images might contain names, addresses, or other details of individuals and/or organisations. Any fictional or nonfictional names, addresses, drug histories, or other details about individuals or organisations are used for demonstration purposes only.

In this release

| | |
|---|----|
| Enhancements | 3 |
| All Minfos pharmacies: Check out our new look!..... | 3 |
| Stock controllers and retail managers: Design and manage your label templates..... | 4 |
| New label type: Shelf Talkers | 6 |
| Updated Label Queue window..... | 7 |
| Simplified label printing dialogs | 8 |
| Stock controllers and retail managers: Manage your categories in one central location..... | 9 |
| Set a performance guideline for a category | 10 |
| Export and import categories..... | 11 |
| Stock controllers and retail managers: New streamlined workflow for managing pricing | 12 |
| Manage your KVI's | 13 |
| Change the price of products in your category | 13 |
| Stock controllers: Import the Items in Pack value for non-drug products | 16 |
| Stock controllers: Change the account number when collecting PharmX orders..... | 17 |
| Pharmacist and dispense techs: 6CPA fee structure now used to calculate the price of DVA unlisted scripts | 17 |
| Pharmacists and dispense techs: Received stock information now sent directly to DD-Book when an order is completed | 17 |
| Pharmacists and dispense techs: Updated owing scripts filter on script enquiry window | 18 |
| Multistore Head Offices: No longer accidentally delete a product that has SOH, sales and purchase history at a slave store..... | 18 |
| Support issues resolved | 19 |
| Dispense | 19 |
| Till..... | 19 |
| Stock Manager | 19 |
| Loyalty..... | 19 |

Enhancements

This section provides details about enhancements in this release.

All Minfos pharmacies: Check out our new look!

Minfos has had a modern makeover in version 4.0.1!

The server icon and loading prompt have been updated to show only the Minfos logo. In addition, the desktop image has changed and shows the Minfos version number, logo and screen name for each of the module screens; for example, Minfos Stock Manager.

Minfos Server icon

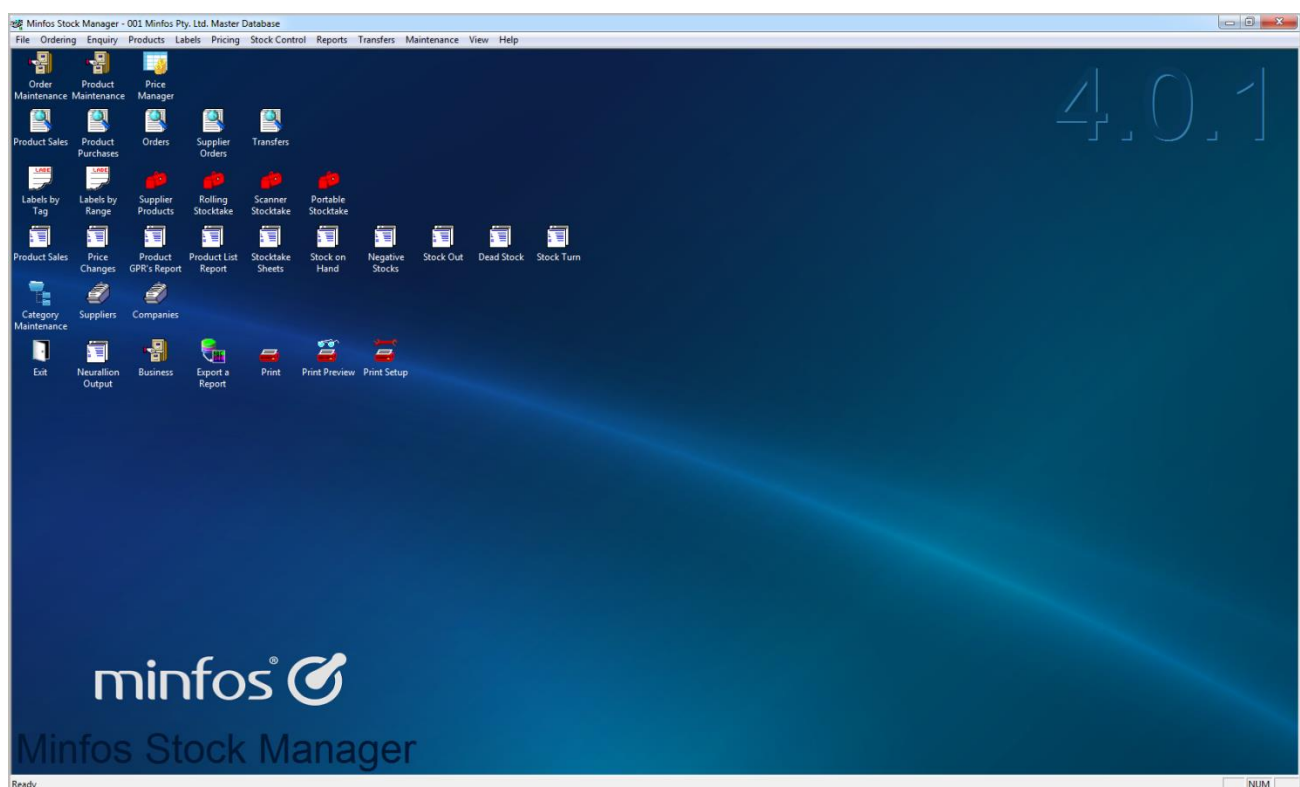


- i** If the icon is not updated in your task bar, restart your server.
- i** If the icon is not updated on your desktop, delete the shortcut then recreate it.

Minfos loading prompt

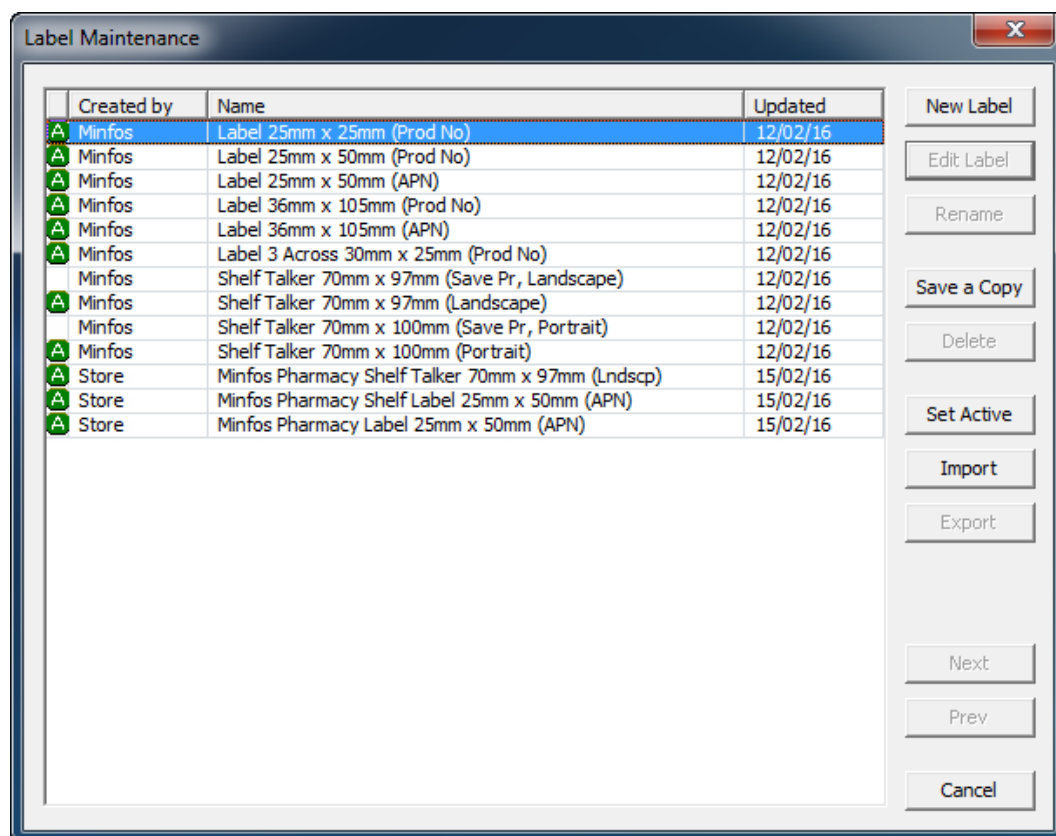


Minfos background



Stock controllers and retail managers: Design and manage your label templates

In Minfos version 4.0.1 you can now create and maintain all of your label templates in the new Label Maintenance window—*Minfos Launch Pad* > **Special menu** > **Utilities** > **Label Maintenance icon**.




There are slight formatting differences between the new default Minfos label templates and the previous templates in 3.12.3. For instructions on changing the layout and format of your labels, see the [Label Maintenance User Guide](#).

This table shows a comparison between the previous label names and the new ones.

| 3.12.3 LABEL TEMPLATE NAMES | 4.0.1 LABEL TEMPLATE NAMES |
|---------------------------------------|--|
| 1. Product Labels. | Label 25mm x 25mm (Prod No) |
| 2. Shelf Label 2 (25mm x 25mm) | Label 25mm x 25mm (Prod No) |
| 4. Shelf Label 3 (25mm x 50mm) | Label 25mm x 50mm (Prod No) |
| | Label 25mm x 50mm (APN) |
| 6. Shelf Label 4 (36mm x 105mm) | Label 36mm x 105mm (Prod No) |
| | Label 36mm x 105mm (APN) |
| 8. Shelf Label 3 Across (30mm x 25mm) | Label 3 Across 30mm x 25mm (Prod No) |
| New | Shelf Talker 70mm x 97mm (Save Pr, Landscape) |
| | Shelf Talker 70mm x 97mm (Landscape) |
| | Shelf Talker 70mm x 100mm (Save Pr, Landscape) |
| | Shelf Talker 70mm x 100mm (Portrait) |

i Label types 3. Shelf Label 2 (25mm x 70mm), 5. Shelf Label 3a (32mm x 50mm) and 7. Shelf Label 5 (2 of 5 Label) are no longer available as default Minfos labels.

In the new Label Maintenance window you can now:

- Set a label as active or inactive. Active labels are shown with the “A”,  icon. When a label is set as inactive, the label type is no longer shown for selection in any of your label printing windows.
- Create a new label, or save a copy of a Minfos label. Store-created label types are reflected in the label printing windows when the label is set as active.
- Edit your store-created labels, which includes:
 - Renaming the label.
 - Adding, editing or deleting label content, including:
 - Category and location.
 - Promotional price and description.
 - Preferred supplier and minimum order quantity.
 - Adding a promotional or member's price.
 - Formatting the text to change the colour, font type and size.
 - Add images to your labels.
- Delete your store-created labels.
- Import and export store-created labels.

New label type: Shelf Talkers

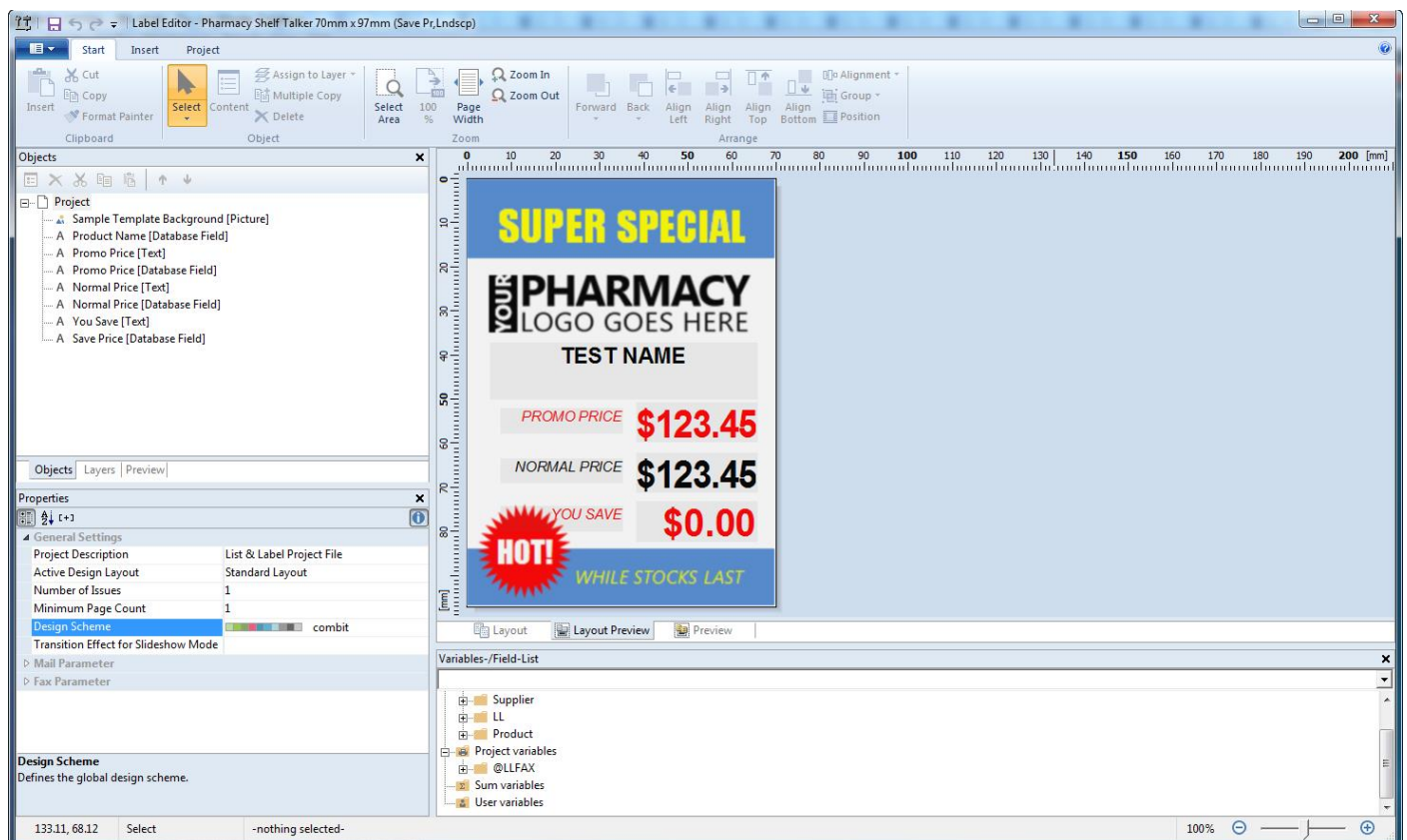
Print Promotional labels with the new Shelf Talker templates!

- i** In order for the promotional price to print on Shelf Talker labels, the product must be part of a currently running set sales price promotion in Minfos Promotions Wizard.

We have provided four shelf talker templates:


- **Shelf Talker 70mm x 97mm (Save Pr, Landscape)**, which is printed in landscape and contains the promotional price, retail price and the amount saved.
- **Shelf Talker 70mm x 97mm (Landscape)**, which is printed in landscape and contains the promotional price.
- **Shelf Talker 70mm x 97mm (Save Pr, Portrait)**, which is printed in portrait and contains the promotional price, retail price and the amount saved.
- **Shelf Talker 70mm x 97mm (Portrait)**, which is printed in portrait and contains the promotional price.

- i** For instructions on customising your own labels and Shelf Talkers, see the [Label Maintenance User Guide](#).

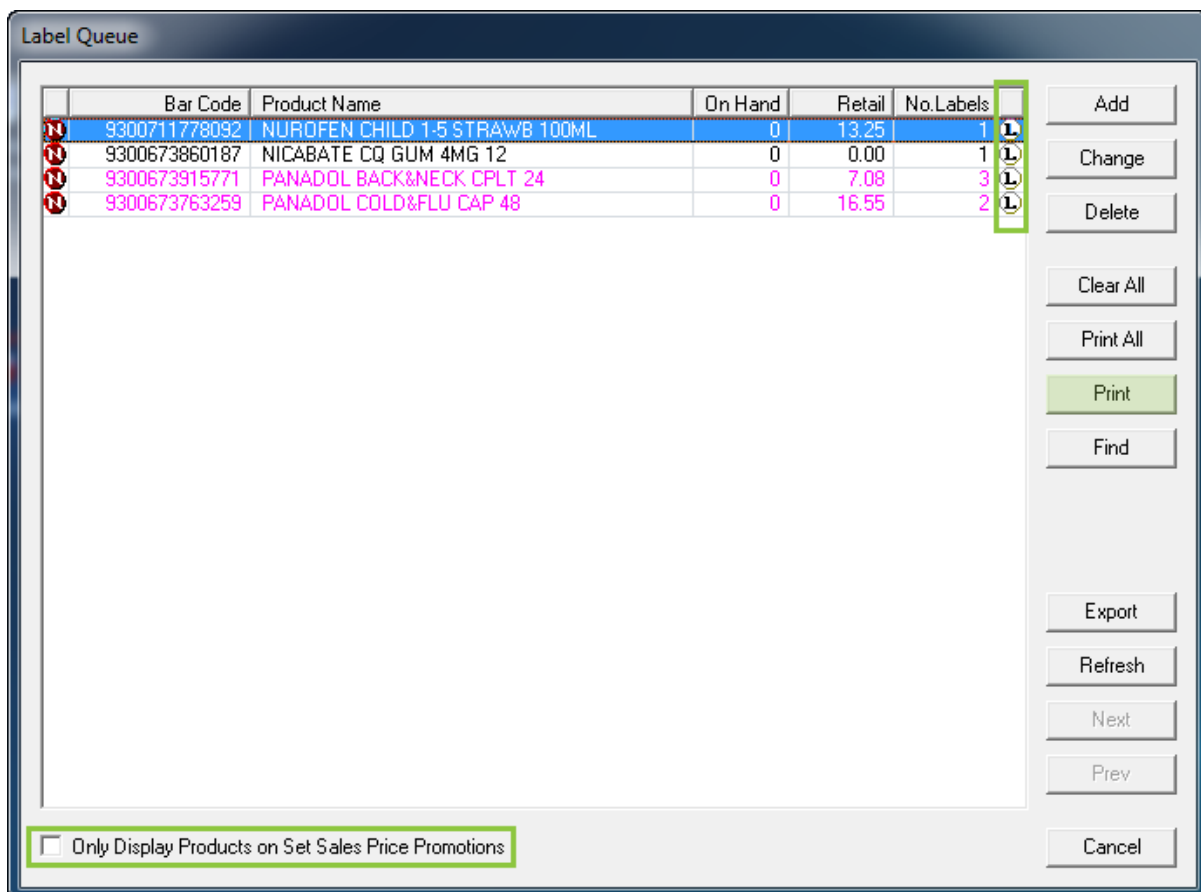


Updated Label Queue window

You will notice a number of changes to the Label Queue window that will make printing your labels much easier:

- The “P” and “S” icons have now been replaced by one “L”, , icon, which signifies that a label is yet to be printed for that product. When a label has been printed for a product, the icon is no longer displayed.
- You no longer have to print all of the labels in the queue; the new **Print** button allows you to select multiple labels within the queue and print only your selection.
- The new **Only Display Products on Set Sales Price Promotions** check box allows you to filter your list to view only the products that are part of a Set Sales Price promotion.

 This filter is only displayed when your store is running the Minfos Promotion Wizard.

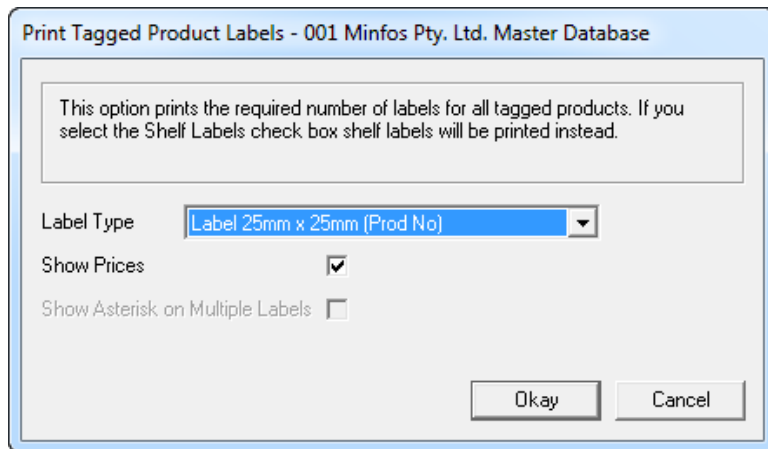


| Bar Code | Product Name | On Hand | Retail | No. Labels |
|---------------|--------------------------------|---------|--------|------------|
| 9300711778092 | NUROFEN CHILD 1-5 STRAWB 100ML | 0 | 13.25 | 1 |
| 9300673860187 | NICABATE CQ GUM 4MG 12 | 0 | 0.00 | 1 |
| 9300673915771 | PANADOL BACK&NECK CPLT 24 | 0 | 7.08 | 3 |
| 9300673763259 | PANADOL COLD&FLU CAP 48 | 0 | 16.55 | 2 |

☐ Only Display Products on Set Sales Price Promotions

Simplified label printing dialogs

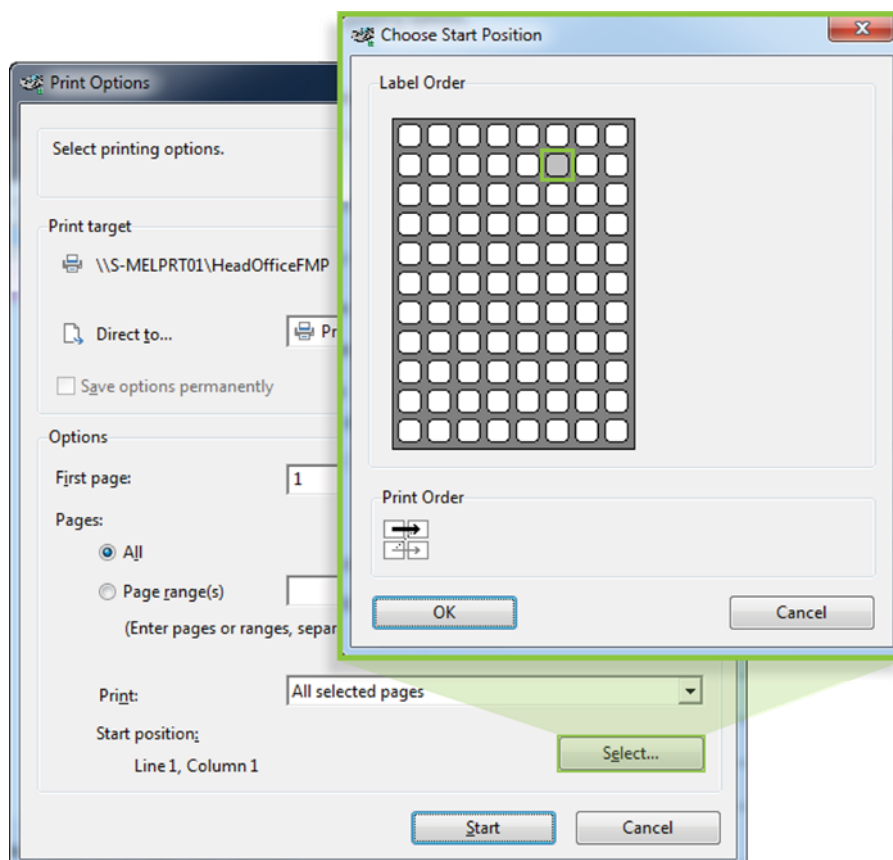
Printing your labels is even more efficient thanks to simplified label printing dialogs in Stock Manager and Promotions Wizard.



In the new dialog, we have removed the:

- **Starting Row** and **Starting Col.** text boxes and replaced them with a grid to make selecting your printing position more efficient and prevent paper wastage.

You no longer have to manually count the rows and columns to find your place on a sheet of labels. In the Print Options window, click **Select...** to choose your start position from a grid.



- **Use MNPN Barcode** and **Use APN Barcode** option buttons.

To select a barcode type, in the **Label Type** drop-down list, select the label that contains the barcode type that you want to print.

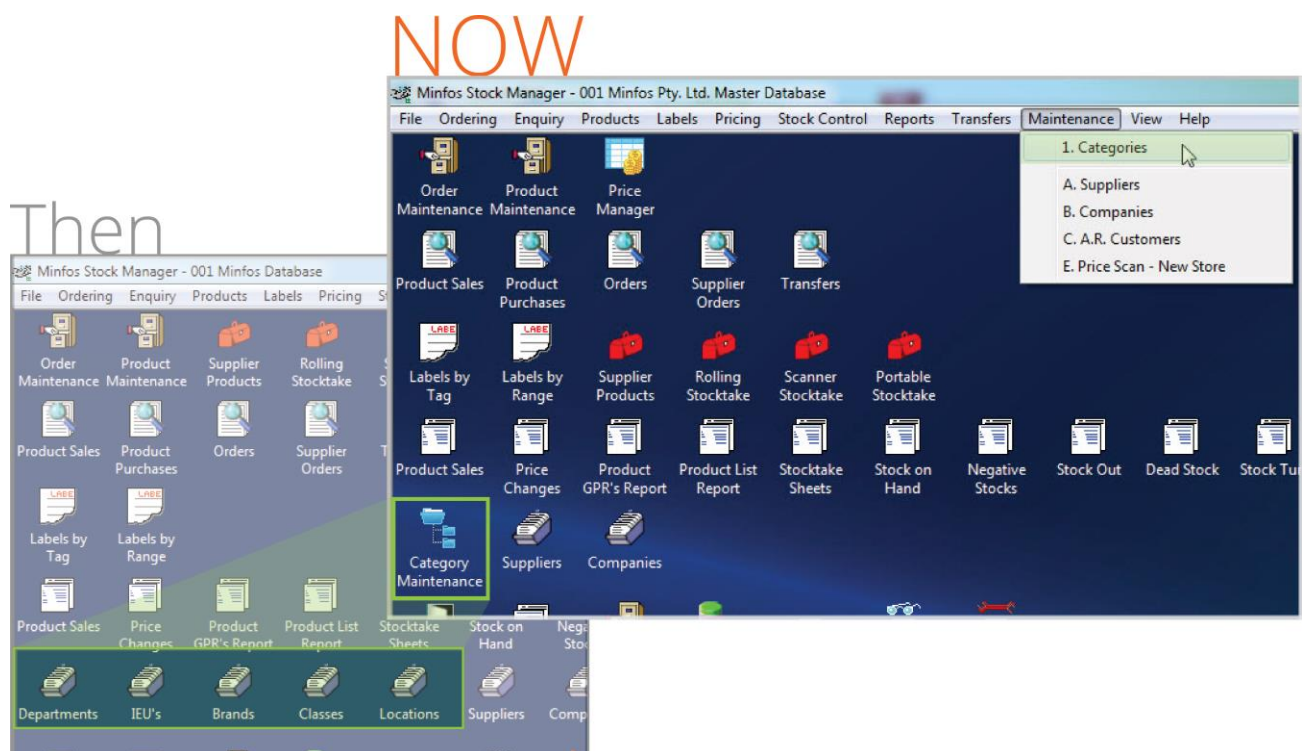
- **Show Location** check box.

By default, standard shelf labels (25mm x 50mm) now print with the location. You can add and delete the location on a store-created label in the Label Editor.

i For instructions on adding or deleting fields from a label, see the [Label Maintenance User Guide](#).

Stock controllers and retail managers: Manage your categories in one central location

On the Minfos Stock manager screen, five of your category icons and menu items have been consolidated in Category Maintenance.



Stock Manager screen changes with Minfos version 4.0.1 on the right.

From the **Category Maintenance** icon, or from the **1. Categories** function on the **Maintenance** menu, you can see a simple workflow for searching, maintaining and reviewing on your pharmacy's categories.

The screenshot shows the 'Category Maintenance' window. At the top, there are dropdown menus for 'Category Type' (set to 'Department'), 'Brand' (set to 'IEU'), and 'Display Order' (set to 'Name'). Below these is a table with the following columns: ID No., Name, Class, Products, GP%, and Markup %.

| ID No. | Name | Class | Products | GP% | Markup % |
|--------|-----------------------------|------------|----------|------|----------|
| 95000 | AC | Department | 8 | 0.00 | 0.00 |
| 36102 | ALL | Location | 572 | 0.00 | 0.00 |
| 30400 | ANTACIDS AND LAXATIVES | | 221 | 0.00 | 0.00 |
| 36700 | AROMATHERAPY | | 1589 | 0.00 | 0.00 |
| 36310 | ARTMATIC | | 0 | 0.00 | 0.00 |
| 36320 | AUSTRALIS | | 1107 | 0.00 | 0.00 |
| 32900 | BABY CARE - GENERAL | | 5127 | 0.00 | 0.00 |
| 322111 | BABY CLOTHING & ACCESSORIES | | 255 | 0.00 | 0.00 |
| 32110 | BABY FOODS | | 486 | 0.00 | 0.00 |
| 30410 | CORAL COLOURS | | 1337 | 0.00 | 0.00 |
| 36110 | COSMAX | | 443 | 0.00 | 0.00 |
| 36600 | COSMETICS - GENERAL | | 16709 | 0.00 | 0.00 |
| 10000 | DISPENSARY SECTION | | 12885 | 0.00 | 0.00 |
| 30100 | EAR PIERCING | | 29 | 0.00 | 0.00 |
| 36230 | ELIZABETH ARDEN | | 1291 | 0.00 | 0.00 |
| 36233 | ESTEE LAUDER | | 5071 | 0.00 | 0.00 |

At the bottom of the window are buttons: Prev, Next, Add, Change, Delete, Find, Print, and Cancel.

In the new Category maintenance window, when you select a **Category Type** all of its associated categories are displayed along with the number of products in each category. You can:

- Sort the list by category **Name** or **Code** (ID No.).
- Add, delete and search for a new category.
- Change the name of a category or set a guideline GP% or Markup% for the category; see "[Set a performance guideline for a category](#)".
- Print a report for the selected category type.

i For instructions, see the [Category Maintenance quick reference guide](#).

Set a performance guideline for a category

Performance guidelines allow you to set GP% and Markup% objectives for each of your categories.

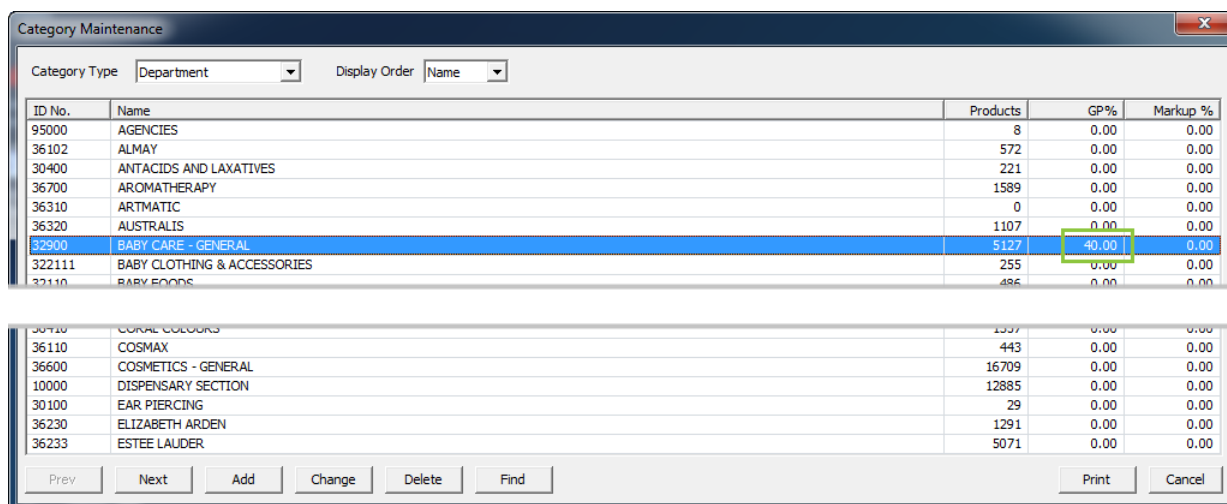
- i** You can make a comparison between your guideline and your category pricing in the new Minfos Price Manager; see, "[Stock controllers and retail managers: New streamlined workflow for managing pricing](#)".
- i** We recommend reviewing other pricing factors, and not just your set guideline, when pricing the products in your category.

To set a performance guideline, double-click the category, or click the category, then click **Change**.

The screenshot shows the 'Department Edit' window. It has fields for 'Code' (32900) and 'Name' (BABY CARE - GENERAL). Below these is a 'Guidelines' section with two input fields: 'GP %' (40.00) and 'Markup %' (0.00). At the bottom are 'OK' and 'Cancel' buttons.

Enter a guideline for the category, then click **OK** to save. The guideline is displayed in the associated column.

- i** This guideline is also reflected in the new Price Manager window; see, “[Stock controllers and retail managers: New streamlined workflow for managing pricing](#)”.



| ID No. | Name | Products | GP% | Markup % |
|--------|-----------------------------|----------|-------|----------|
| 95000 | AGENCIES | 8 | 0.00 | 0.00 |
| 36102 | ALMAY | 572 | 0.00 | 0.00 |
| 30400 | ANTACIDS AND LAXATIVES | 221 | 0.00 | 0.00 |
| 36700 | AROMATHERAPY | 1589 | 0.00 | 0.00 |
| 36310 | ARTMATIC | 0 | 0.00 | 0.00 |
| 36320 | AUSTRALIS | 1107 | 0.00 | 0.00 |
| 32900 | BABY CARE - GENERAL | 5127 | 40.00 | 0.00 |
| 322111 | BABY CLOTHING & ACCESSORIES | 255 | 0.00 | 0.00 |
| 32110 | BABY FOODS | 486 | 0.00 | 0.00 |
| 30710 | CORAL COLOURS | 1537 | 0.00 | 0.00 |
| 36110 | COSMAX | 443 | 0.00 | 0.00 |
| 36600 | COSMETICS - GENERAL | 16709 | 0.00 | 0.00 |
| 10000 | DISPENSARY SECTION | 12885 | 0.00 | 0.00 |
| 30100 | EAR PIERCING | 29 | 0.00 | 0.00 |
| 36230 | ELIZABETH ARDEN | 1291 | 0.00 | 0.00 |
| 36233 | ESTEE LAUDER | 5071 | 0.00 | 0.00 |

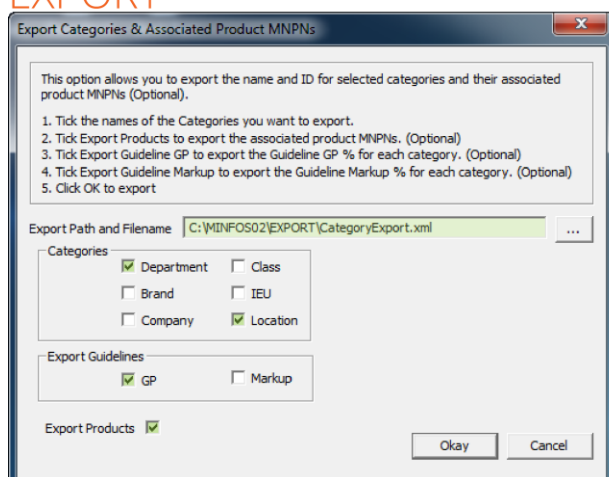
Export and import categories

Exporting and importing categories enables uniform category information throughout your group. All of your pharmacies can now have uniform categories, and you can control whether they also have the same performance guidelines and associated products.

To export or import products, on the Minfos Stock Manager screen, click the **File** menu, then click:

- G. Category Export
- H. Category Import

EXPORT



Export Categories & Associated Product MNPNS

This option allows you to export the name and ID for selected categories and their associated product MNPNS (Optional).

1. Tick the names of the Categories you want to export.
2. Tick Export Products to export the associated product MNPNS. (Optional)
3. Tick Export Guideline GP to export the Guideline GP % for each category. (Optional)
4. Tick Export Guideline Markup to export the Guideline Markup % for each category. (Optional)
5. Click OK to export

Export Path and Filename:

Categories:

☒ Department ☐ Class

☐ Brand ☐ IEU

☐ Company ☒ Location

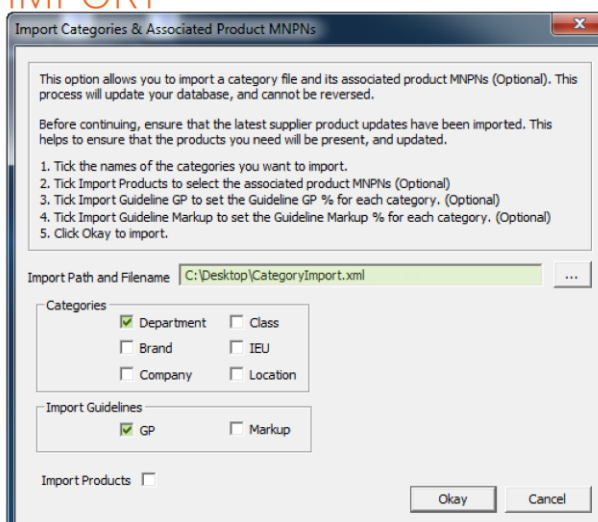
Export Guidelines:

☒ GP ☐ Markup

Export Products ☒

Okay Cancel

IMPORT



Import Categories & Associated Product MNPNS

This option allows you to import a category file and its associated product MNPNS (Optional). This process will update your database, and cannot be reversed.

Before continuing, ensure that the latest supplier product updates have been imported. This helps to ensure that the products you need will be present, and updated.

1. Tick the names of the categories you want to import.
2. Tick Import Products to select the associated product MNPNS (Optional)
3. Tick Import Guideline GP to set the Guideline GP % for each category. (Optional)
4. Tick Import Guideline Markup to set the Guideline Markup % for each category. (Optional)
5. Click Okay to import.

Import Path and Filename:

Categories:

☒ Department ☐ Class

☐ Brand ☐ IEU

☐ Company ☐ Location

Import Guidelines:

☒ GP ☐ Markup

Import Products ☐

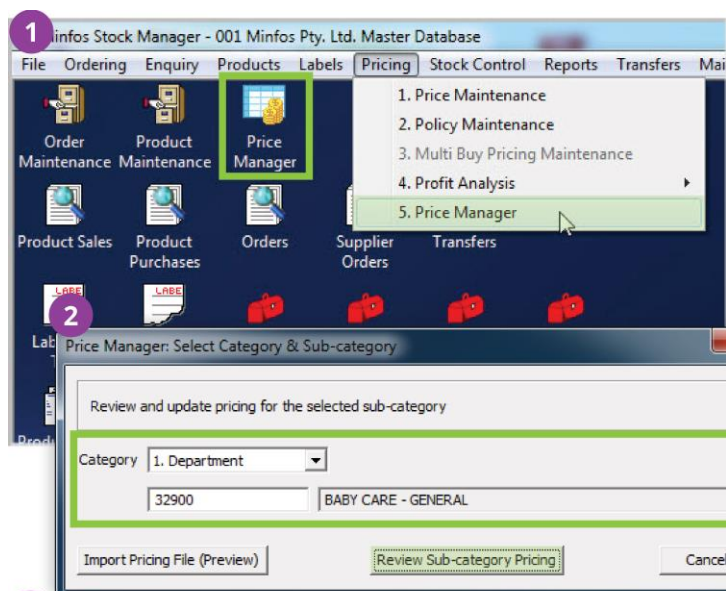
Okay Cancel

You can export and import all category types (except supplier), and their associated category guidelines and products. And, you can choose to only import selected information in the exported file that is relevant to your pharmacy.

i GP% and Markup% guidelines cannot be imported or exported for companies.

Stock controllers and retail managers: New streamlined workflow for managing pricing

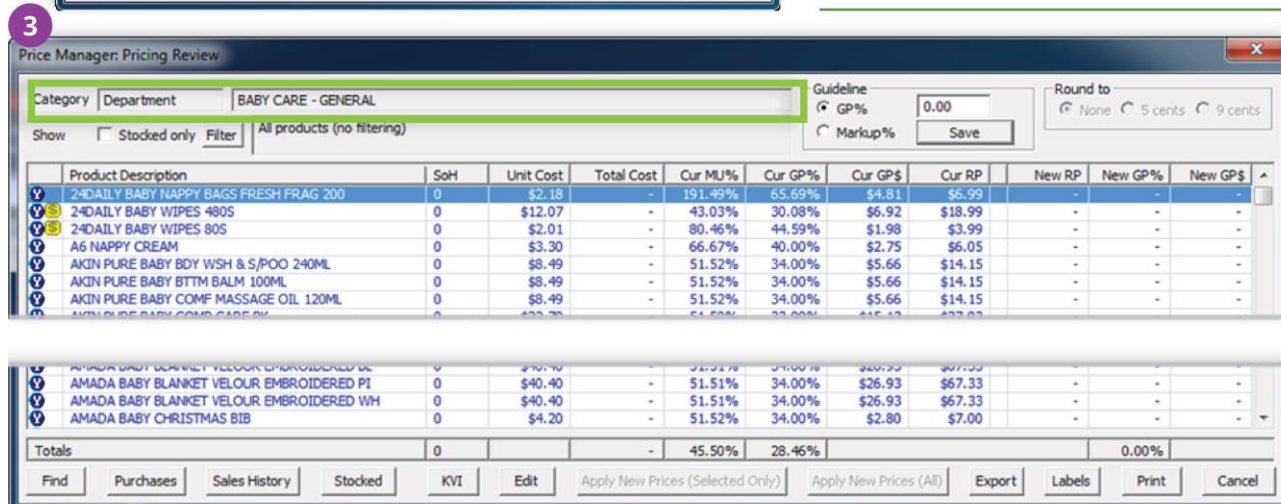
In Minfos 4.0.1 you can now manage the pricing of all of the products in a category in the new Price Manager screen.



2 In the **Category** drop-down list, select:

- **1. Department**
- **2. Company**
- **3. Brand**
- **4. IEU**
- **5. Class**
- **6. Location**
- **7. Price Policy**
- **8. Preferred Supplier**
- **9. Order Number**
- **10. KVI**

i When you select **10. KVI**, all KVIs across all of your categories are displayed.



On the Price Manager: Pricing Review window, you can:

- Filter the list using the
 - **Stocked only** check box, to show only stocked products.

- **Filter** button for price filtering options.
- Set a GP% or Markup% performance guideline; see [“Display suggested new pricing for products”](#) for instructions.

i The **Round to** option buttons are available when new pricing is displayed. See, [“Display suggested new pricing for products”](#) for details on how to display new product pricing.

- Search for a product.
- View a product's sales and purchase history.
- Mark a product as stocked.
- Manage your KVI; see, [“Manage your KVI's”](#).
- Edit a product's stock card.
- Apply new product pricing; see [“Apply the new prices to products”](#) for more information.
- Export a pricing file. The pricing export contains:
 - The products' current retail prices and MNPNS.
- Send a label to the label queue or run a Price Changes report for products that have new pricing applied.

i Labels sent to the queue will only show products that have a positive SOH.

- Print a Price Review report for the selected category.

i For instructions on managing your pricing, see the [Price Manager User Guide](#).

Manage your KVI's

Kvi's can now be flagged against the product directly from the product's stock card.

Products that are marked as a KVI are shown with the yellow “\$” icon, .

Change the price of products in your category

Suggested new pricing is displayed in the **New RP**, **New GP%/New MU%**—depending on which **Guideline** option button is selected—and **New GP\$** columns.

i When a guideline already exists, then suggested retail prices are populated by default.

Display suggested new pricing for products

When suggested new product pricing is displayed, the **Round to** option buttons allow you to set the rounding of the new prices to the nearest 5 cents or 9 cents, without having to manually update the prices.

- i** New prices are not immediately applied so that you can review the price of each product; see, “Apply the new prices to products” for instructions on applying new prices.

There are a number of ways to display new pricing for products. You can:

- Set a GP% or Markup% as a pricing guideline.

In the Guideline group box, click either the GP% or Markup% option button, enter your pharmacy's guideline, then click **Save** or **Tab**. Saving will update the pricing, and also save the guideline against the category.

The suggested new pricing is displayed.

| Product Description | SoH | Unit Cost | Total Cost | Cur MU% | Cur GP% | Cur GP\$ | Cur RP | New RP | New GP% | New GP\$ |
|--|----------|-----------|------------|---------------|---------------|----------|---------|---------|---------------|----------|
| 24DAILY BABY NAPPY BAGS FRESH FRAG 200 | 0 | \$2.18 | - | 19.49% | 65.69% | \$4.81 | \$6.99 | \$4.00 | 40.05% | \$1.82 |
| 24DAILY BABY WIPES 480S | 0 | \$12.07 | - | 43.03% | 30.08% | \$6.92 | \$18.99 | \$22.13 | 40.00% | \$10.06 |
| 24DAILY BABY WIPES 80S | 0 | \$2.01 | - | 80.46% | 44.59% | \$1.98 | \$3.99 | \$3.69 | 40.08% | \$1.68 |
| A6 NAPPY CREAM | 0 | \$3.30 | - | 66.67% | 40.00% | \$2.75 | \$6.05 | - | - | - |
| AKIN PURE BABY BDY WSH & S/POO 240ML | 0 | \$8.49 | - | 51.52% | 34.00% | \$5.66 | \$14.15 | \$15.57 | 40.02% | \$7.08 |
| AKIN PURE BABY BTM BALM 100ML | 0 | \$8.49 | - | 51.52% | 34.00% | \$5.66 | \$14.15 | \$15.57 | 40.02% | \$7.08 |
| AKIN PURE BABY COME MASSAGE OIL 120ML | 0 | \$8.49 | - | 51.52% | 34.00% | \$5.66 | \$14.15 | \$15.57 | 40.02% | \$7.08 |
| AMADA BABY BLANKET VELOUR EMBROIDERED BL | 0 | \$40.40 | - | 51.51% | 34.00% | \$26.93 | \$67.33 | \$74.07 | 40.00% | \$33.67 |
| AMADA BABY BLANKET VELOUR EMBROIDERED PI | 0 | \$40.40 | - | 51.51% | 34.00% | \$26.93 | \$67.33 | \$74.07 | 40.00% | \$33.67 |
| AMADA BABY BLANKET VELOUR EMBROIDERED WH | 0 | \$40.40 | - | 51.51% | 34.00% | \$26.93 | \$67.33 | \$74.07 | 40.00% | \$33.67 |
| AMADA BABY CHRISTMAS BIB | 0 | \$4.20 | - | 51.52% | 34.00% | \$2.80 | \$7.00 | \$7.70 | 40.00% | \$3.50 |
| Totals | 0 | | | 45.50% | 28.46% | | | | 38.85% | |

- Import a pricing file from either another store or your head office.

On the Price Manager: Select Category & Sub-category dialog, click **Import Pricing File (Preview)**, then search for the pricing file you want to import.

The pricing file is imported into the Price Manager: Pricing Review window with the new retail price displayed in **brown**.

Price Manager: Pricing Review

Category Imported

Minfos Database - Department BABY CARE - GENERAL - GP% of 0.00

Show

☐ Stocked only

Filter

All products (no filtering)

Guideline

☒ GP%

0.00

☐ Markup%

Save

Round to

☒ None

☐ 5 cents

☐ 9 cents

| | Product Description | SoH | Unit Cost | Total Cost | Cur MU% | Cur GP% | Cur GP\$ | Cur RP | | New RP | New GP% | New GP\$ |
|--------|--|-----|-----------|------------|---------|---------|----------|---------|---|---------|---------|----------|
| V | 24DAILY BABY NAPPY BAGS FRESH FRAG 200 | 0 | \$2.18 | - | 66.81% | 40.05% | \$1.82 | \$4.00 | ↔ | \$6.99 | 65.69% | \$4.81 |
| V | 24DAILY BABY WIPES 480S | 0 | \$12.07 | - | 43.03% | 30.08% | \$6.92 | \$18.99 | | \$18.99 | 30.08% | \$6.92 |
| V | 24DAILY BABY WIPES 80S | 0 | \$2.01 | - | 80.46% | 44.59% | \$1.98 | \$3.99 | | \$3.99 | 44.59% | \$1.98 |
| V | A6 NAPPY CREAM | 0 | \$3.30 | - | 66.67% | 40.00% | \$2.75 | \$6.05 | ↑ | \$6.55 | 44.58% | \$3.25 |
| V | AKTN PURE BABY BDY WSH & S/POO 240MI | 0 | \$8.49 | - | 66.72% | 40.02% | \$7.08 | \$15.57 | ↓ | \$14.95 | 37.53% | \$6.46 |
| V | AMADA BABY BLANKET VELOUR EMBROIDERED BL | 0 | \$40.40 | - | 51.51% | 34.00% | \$26.93 | \$67.33 | ↓ | \$65.95 | 32.62% | \$25.55 |
| V | AMADA BABY BLANKET VELOUR EMBROIDERED PI | 0 | \$40.40 | - | 51.51% | 34.00% | \$26.93 | \$67.33 | ↓ | \$65.95 | 32.62% | \$25.55 |
| V | AMADA BABY BLANKET VELOUR EMBROIDERED WH | 0 | \$40.40 | - | 51.51% | 34.00% | \$26.93 | \$67.33 | ↓ | \$65.95 | 32.62% | \$25.55 |
| V | AMADA BABY CHRISTMAS BIB | 0 | \$4.20 | - | 51.52% | 34.00% | \$2.80 | \$7.00 | ↓ | \$6.95 | 33.53% | \$2.75 |
| Totals | | 0 | | - | 45.21% | 28.41% | | | | | 28.26% | |

Find

Purchases

Sales History

Stocked

KVI

Edit

Apply New Prices (Selected Only)

Apply New Prices (All)

Export

Labels

Print

Cancel

- Override or enter a new retail price easily. Double-click a product's **New RP** field and enter a new price for the product or double-click a product's **New GP%/New MU%** field and enter a new GP% or Markup%.

| | | | | | | | | | | | | |
|---|---|--------|---|--------|--------|--------|--------|--------|--------|--------|--|--|
| AMADA BABY APRON FEEDER, PRINT & POCKET | 0 | \$4.54 | - | 51.58% | 34.03% | \$3.03 | \$7.57 | - | - | - | | |
| AMADA BABY APRON FEEDER, PRINT & POCKET | 0 | \$4.54 | - | 51.58% | 34.03% | \$3.03 | \$7.57 | - | - | - | | |
| AMADA BABY BIB ANIMAL PRINT VELCRO NECK | 0 | \$4.82 | - | 51.45% | 33.97% | \$3.21 | \$8.03 | \$8.32 | 36.27% | \$3.50 | | |
| AMADA BABY BIB GRANDPA'S MY MATE BLUE | 0 | \$4.60 | - | 51.58% | 34.03% | \$3.07 | \$7.67 | - | - | - | | |
| AMADA BABY BIB GRANDMA LOVES ME PINK | 0 | \$4.60 | - | 51.58% | 34.03% | \$3.07 | \$7.67 | \$8.58 | 41.03% | \$3.98 | | |
| AMADA BABY BIB SML I LOVE DADDY BLUE | 0 | \$4.81 | - | 51.58% | 34.03% | \$3.21 | \$8.02 | - | - | - | | |

When you manually enter a new retail price or GP%/Markup%, the new retail price is displayed in **brown**.

Apply the new prices to products

You can apply the new prices to:

- Selected products (*recommended*), by selecting one or more products, then clicking **Apply New Prices (Selected Only)**.
- All products, by clicking **Apply New Prices (All)**.

i You can choose to exclude KVI products when applying the new prices to all products.

When you apply a new price, the product is displayed with the word **APPLIED**.

| | | | | | | | | | | | | |
|---|---|--------|---|--------|--------|--------|--------|---------|--------|--------|--|--|
| AMADA BABY APRON FEEDER, PRINT & POCKET | 0 | \$4.54 | - | 66.60% | 39.98% | \$3.78 | \$8.32 | APPLIED | - | - | | |
| AMADA BABY BIB ANIMAL PRINT VELCRO NECK | 0 | \$4.82 | - | 66.73% | 40.02% | \$4.02 | \$8.84 | APPLIED | - | - | | |
| AMADA BABY BIB GRANDPA'S MY MATE BLUE | 0 | \$4.60 | - | 66.60% | 39.98% | \$3.83 | \$8.43 | APPLIED | - | - | | |
| AMADA BABY BIB GRANDMA LOVES ME PINK | 0 | \$4.60 | - | 51.58% | 34.03% | \$3.07 | \$7.67 | \$8.43 | 39.98% | \$3.83 | | |
| AMADA BABY BIB SML I LOVE DADDY BLUE | 0 | \$4.81 | - | 51.58% | 34.03% | \$3.21 | \$8.02 | \$8.82 | 40.01% | \$4.01 | | |
| AMADA BABY BIB SML I LOVE DADDY PINK | 0 | \$4.81 | - | 51.58% | 34.03% | \$3.21 | \$8.02 | \$8.82 | 40.01% | \$4.01 | | |

Stock controllers: Import the Items in Pack value for non-drug products

You no longer have to manually enter a product's items in pack. The new check box on the M.N.P.N. 2 Updates window now allows you to import the items in pack that are provided by the supplier, via the MNPN update.

M.N.P.N. 2 Updates

Select the type of update Company or Supplier, and the required Company/Supplier. The system will run Minfos Net Terminal and then Import the MNPN Update.

This option imports MNPN updates, if the products can not be matched by name they will be added and you will need to merge your existing products to the new MNPN ones. This option is ONLY for MNPN sites. If unsure please check with support.

Update Type: 1. Supplier.

Supplier: 02120 BLACKMORES LTD

Alternate Barcodes: ☒ (If Ticked this will import any alternate barcodes for products)

Minfos Depts: ☐ (If Ticked this will update Minfos Depts)

Import Names: ☒ (If Ticked this will update product names)

Items in Pack: ☒ (If Ticked this will update items in pack for non-drug products)

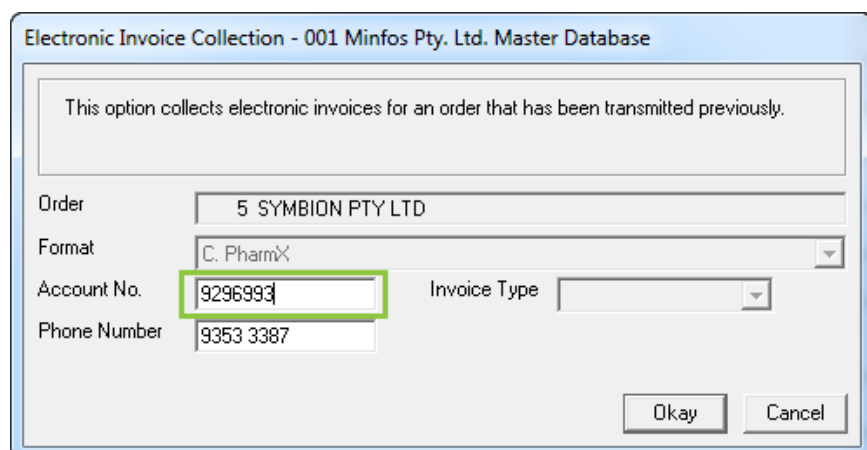
Okay Cancel

When the **Items in Pack** check box is checked, the items in pack details are imported for all of the supplier's products in the update.

i Manually entered items in pack values will be overwritten by the imported values.

Stock controllers: Change the account number when collecting PharmX orders

You can now change the account number when collecting a PharmX order for a selected supplier. This is particularly useful if your pharmacy uses OTC and ethical accounts, as it enables you to enter the relevant account number without having to edit it in Supplier Maintenance.



Pharmacist and dispense techs: 6CPA fee structure now used to calculate the price of DVA unlisted scripts

The price of your DVA unlisted scripts is now calculated using the 6CPA AHI fee model, which means you are now able to more easily claim the correct amount from Medicare for DVA unlisted scripts.

For more information about the 6CPA pricing and AHI fee model, see the [6CPA Frequently Asked Questions](#) on the Self Service Portal.

Pharmacists and dispense techs: Received stock information now sent directly to DD-Book when an order is completed

You no longer have to manually enter received stock information into DD-Book. When you update to the latest version of DD-Book, your Schedule 8 stock on hand information from a received order is now automatically sent to DD-Book where you can review and confirm the information.

⚠ To use this enhancement, you will need to update your DD-Book software. Methsof will advise when this update is available.

Pharmacists and dispense techs: Updated owing scripts filter on script enquiry window

Thanks to your feedback the **Owing scripts only** filter on the Script Enquiry has been updated to **Outstanding owing scripts only**. Now when you use the filter, deleted owing scripts are no longer displayed.

| Script Date | Disp. Date | Script # | Customer | Drug Name | Qty | Directions | Doctor | Price |
|-------------|------------|----------|--------------|------------------|-----|------------|--------|-------|
| 16/02/2016 | 16/02/2016 | 602161 | SMITH, JASON | AMOXIL CAP 500MG | 20 | 0 | 13.55 | |

Multistore Head Offices: No longer accidentally delete a product that has SOH, sales and purchase history at a slave store

Products that have SOH, sales or purchase information at your slave stores can no longer be deleted at head office. When you attempt to delete the product, and this product information has been received at head office, the following notification is displayed.

Message

This product cannot be deleted because it has been used in at least one slave store.

Support issues resolved

This section provides details about support issues resolved in this release.

Dispense

The following Dispense issues have been resolved:

- The last concessional script dispensed that reaches the Safety Net threshold, is now shown on the Safety Net report.
- When printing a List of Rejected/Pending Scripts, where there are resubmitted scripts from a closed claim, the serial numbers are now correct.

Till

The following Till issues have been resolved:

- A number of issues have now been resolved, which were causing the Premium Free Incentive fee to be over calculated at the Till.
- No longer receive a major balance error when cancelling a club voucher, then selling a gift voucher.

Stock Manager

The following Stock Manager issue have been resolved:

- When importing wholesaler updates, the **Update Retail Units** check box now correctly remains unchecked for the supplier **06080 SYMBION PTY LTD**.

Loyalty

The following loyalty issues have been resolved:

- When you search for a loyalty customer in the Find Member window, without scanning or entering the card number, the **State** drop-down list no longer changes from **ANY** to **OTHER**.
- We fixed a bug that was causing an intermittent Loyalty System Unavailable error message, which affected some Chemmart pharmacies.
- You will no longer receive a **Card number already in use** error when you attempt to add a customer with a future date of birth. You will now receive an Invalid details error message.